

Further information

Battery and battery life

Your FxChip runs on a **CR 2032 battery** (provided) with a 2'000 hours battery life.

• **Low battery indicator:**

- Place the FxChip in the detection field of a transmitter turned on. If the red led of the FxChip doesn't light up, it means that your FxChip's battery is too low.
- When the battery becomes low, you are notified on your MyFreelap account.

• **Replace the battery:**

Unscrew the 4 screws on the back of the device using a screwdriver, then remove the cover and the gasket. Remove the old battery, and insert a new CR 2032 battery. Make sure that the new battery is the right way round. Put back the gasket, the cover, and screw back the 4 screws.

Technical sheet

- Weight: 17 g
- Dimensions: 36 x 48 x 14 mm
- Technology: Radio transmission
- Compatibility: Relay Coach BLE, e-Starter, Tx Touch Pro, Tx Pad Pro, Tx Pro Team, Tx Junior Pro, Tx Track Pro, PowerUnit, Tx Gate Pro, Tx Fulltrack Pro, CxUnit, LED Display.
- Accuracy: 1/100 of a second
- Memory: 10 intermediate LAP times
- Minimum time between 2 transmitters: 0,7 second
- Battery: CR 2032
- Battery life: 2'000 hours
- Water resistance: IP67
- Operating temperatures: -20°C to +50°C

Technical support

Find our FAQ (Frequently Asked Questions), as well as other manuals and user guides, on our website at: **www.freelap.com/support**

If you cannot find the answers to your questions, please contact your Freelap dealer. Find the list of Freelap dealers at: **www.freelap.com/freelap-contact**

After-sales service & warranty

The FxChip is guaranteed 2 years. If you have any questions or if you need assistance with your device, please contact your Freelap dealer.

freelap®
freedom of timing

FxChip



FREELAP SA

Av. D.-Jeanrichard 2A CH-2114 Fleurier – Switzerland
+41 32 861 52 42 - www.freelap.com



@freelap

About the FxChip

The FxChip is the Freelap radio transponder. Worn by the athlete, it accurately measures time intervals between each transmitters crossed, and automatically sends all timing data instantly upon arrival (crossing the finish transmitter) via Bluetooth to your Relay Coach BLE. Then, your Relay Coach BLE instantly transmits the data via Bluetooth to your mobile device.

Use of the FxChip

1. Prerequisites

FxChip transponder is a part of the Freelap timing system. To get your timing data, you must **turn on and place the Relay Coach BLE and the transmitters on the track, and use the MyFreelap app** (cf corresponding user manuals).

2. Get to know your device



Red Led: blinks when it detects a transmitter.

Identifier (ID): Each transponder has a unique ID (2 letters - 4 digits), which makes it possible to time several athletes simultaneously.

3. Activate the FxChip

The FxChip transponder has no button: **it automatically turns on when moved** and it stops after 10 minutes of inactivity.

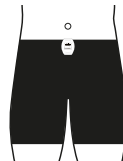
A red led lights up when it crosses a transmitter's detection field, to confirm that the transponder is detecting the transmitter.

4. Attach the FxChip

The attachment of the FxChip depends on your sport.

For Running:

Attach the FxChip to the belt of the athlete's short using his attachment clip (provided). **It must imperatively be attached to the waist, centered in the alignment of the navel, positioned vertically and facing outward.**



For Biking:

Attach the FxChip **to the fork of the bike** using the velcro tape. The velcro tape and the chip orientation depends on which transmitters are used.

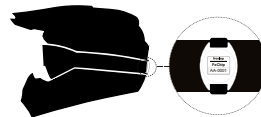
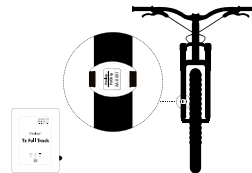
With Tx Track Pro transmitters:

It must be attached using the FxMTB, positioned **vertically** and facing forward.



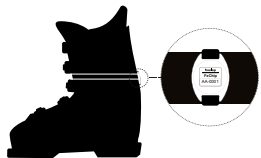
With Tx Full Track transmitters:

It must be attached using the FxBike, positioned **horizontally** and facing forward.



For Motorbiking:

Attach the FxChip to the elastic band of the rider's mask using its Velcro strap. **It must imperatively be centered on the back of the helmet, positioned vertically and facing outward.**



For Skiing:

Attach the FxChip to the skier's ski boot using its Velcro strap. **It must imperatively be centered on the back of ski boot, placed vertically and facing outward.**



Attaching the transponder to any other location or position may result in inaccuracies or non-detection.

The FxChip is an autonomous and smart device that does not require any manipulation, except its good fixation and orientation

5. Memory

- Your FxChip has a memory of max 10 intermediate times. This means that **your track must contain a maximum of 11 transmitters.**
- The timing data collected by your FxChip transponder is not stored in the transponder but safely saved in your MyFreelap account.