

3 FURTHER INFORMATION

» BATTERY AND BATTERY LIFE

Your Tx H2O Pro has a **3.7V 5Ah LiPo rechargeable battery**.

> **Low battery indicator:** When the battery becomes low, the "PWR" led flashes red.

> Recharging the battery:

- Insert the USB cable into the USB port located at the back of the transmitter. To access the USB port of the transmitter, unclip the gasket. Then connect it to the power cable (supplied with adapter).
- It is recommended to make complete charges (**charging time: 10h**).
- When the battery is fully charged, the device has a **battery life of 60h**.
- Your Tx H2O Pro has an automatic shutdown function (after 12 hours), to save the battery.

» TECHNICAL SHEET

- **Weight:** 400g
- **Dimensions:** 55 x 115 x 195 mm
- **Compatibility:** FxSwim
- **Transmitter with 1 code:** Finish
- **Detection field:** 2.5m
- **Accuracy:** 2/100 of a second
- **Minimum distance between 2 transmitters:** 50m
- **Battery:** 3.7V 5Ah LiPo + charging indicator, and automatic shutdown after 12h (charging time: 10 hours)
- **Battery life :** 60 hours
- **Water resistance:** 3ATM
- **Operating temperatures:** -20°C to +50°C

» TECHNICAL SUPPORT

Our FAQ (Frequently Asked Questions), as well as other manuals and user guides, can be found on our website at:
<http://www.freelap.ch/support/>

If you cannot find the answers to your questions, please contact your Freelap dealer. Find the list of Freelap dealers at:
<http://www.freelap.ch/freelap-contact/>

» AFTER-SALES SERVICE & WARRANTY

Your TX H2O Pro is **guaranteed 2 years**. If you have any questions or if you need assistance with your device, please contact your Freelap dealer.



www.freelap.ch

Follow Freelap on



MADE BY FREELAP SA
Av. D.-Jeanrichard 2A
CH-2114 Fleurier – Switzerland
+41 32 861 52 42 - www.freelap.ch

freelap[®]
freedom of timing

TX H2O PRO

FREELAP TRANSMITTER SPECIALLY
DESIGNED FOR SWIMMING

INSTRUCTION FOR USE

Congratulations on the purchase of your Tx H2O Pro transmitter ! This device has been designed to be convenient and simple to use. In this guide you will find all the information about how it works.

1 OVERALL FUNCTIONING

» YOUR TX H2O PRO

Your Tx H2O Pro is the **Freelap transmitter specially designed for swimming**. This transmitter emits a magnetic field detected automatically by the transponder FxSwim during the passage of the swimmer. It lets you **precisely obtain, your passage times and rest times**. Times are sent as soon as the swimmer crosses a transmitter.

2 USE OF YOUR TX H2O PRO

» PREREQUISITES

Your Tx H2O Pro transmitter is part of the Freelap system. In order to make it work, you must **attach transponder(s) to the swimmer(s) and use the MyFreelap app** (consult the corresponding user manuals for more details).

» BUTTON, LEDS AND PORT

> BUTTON :

1. ON/OFF BUTTON : Turns on / off the transmitter.



> LEDS :

2. PWR : indicates that the device is on, and turns red when the battery is low.

3. FINISH : indicates that the transmitter is set as "finish" transmitter.

> PORT :

4. USB : Lets you charge the battery.

» TURN ON YOUR TX H2O PRO

To turn on the transmitter simply **press the central "ON" button for 1 second**.

» PLACE YOUR TX H2O PRO

• **Place the Tx H2O Pro on the starting block** (or on the ground at the end of the swim lane)

The transmitter has a detection field of 2.5m, **it must be placed as follows:**

• This transmitter has the shape of an arrow. **Place it at the end of the water line, pointing the tip of the arrow towards the swim lane.**

• Place the transmitter **at a maximum distance of 2.5m from the water** (so that the transponder of the swimmer crosses the detection field).

This transmitter lets you obtain accurate passage times over the desired distance:

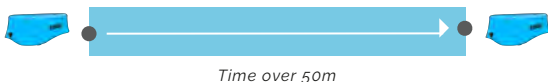
- In a swimming pool of 25m you can choose to obtain passage times **over 50m by placing 1 transmitter only on the starting block** (you time the round - trip, so 50m).

> Example in a swimming pool of **25m**



- In a swimming pool of 50m you can choose to obtain passages times **over 50m by placing 2 transmitters** (1 transmitter at each end of the swimmer's water line).

> Example in a swimming pool of **50m**



!/ \ **Placing the transmitter at any other location or position may result in inaccuracies or non-detection.**

» SIMULTANEOUSLY USE TX H2O PRO TRANSMITTERS ON ADJACENT SWIMMING LANES

The Tx H2O Pro **only covers one swimming lane**. You can **time several swimming lanes by placing Tx H2O Pro transmitters at the end of each water line**.

> Example with 2 swimming lanes :

