

3 FURTHER INFORMATION

» BATTERY AND BATTERY LIFE

Your Tx Gate Pro has **2 LR6 (AA) batteries (supplied), with a battery life of 15'000 starts.**

> **Low battery indicator:** When the battery becomes low, the "PWR" led of your Tx Gate Pro turns red.

> **To change the batteries:** Unscrew the 4 screws on the back of the device using a screwdriver, then remove the cover and the gasket. Remove used batteries, and insert 2 new LR6 (AA) batteries. Put back the gasket, cover, and screw back the 4 screws.

» TECHNICAL SHEET

- **Weight:** 320 g
- **Dimensions:** 60 x 70 x 125 mm
- **Compatibility:** FxChip / FxChip BLE
- **Transmitter with 1 code:** Start
- **Accuracy:** 1/100 of a second
- **Detection field:** 1.5 meters
- **Minimum time between 2 transmitters:** 0.7 second
- **Batteries:** 2 x LR6 (AA)
- **Life cycle:** 15'000 starts
- **Materials:** Fiberglass rod
- **Water resistance:** 3ATM
- **Operating temperatures:** -20°C to +50°C

» TECHNICAL SUPPORT

Our FAQ (Frequently Asked Questions), as well as other manuals and user guides, can be found on our website at:
<http://www.freelap.ch/support/>

If you cannot find the answers to your questions, please contact your Freelap dealer. Find the list of Freelap dealers at:
<http://www.freelap.ch/freelap-contact/>

» AFTER-SALES SERVICE & WARRANTY

Your TX Gate Pro is **guaranteed 2 years.** If you have any questions or if you need assistance with your device, please contact your Freelap dealer.



www.freelap.ch

Follow Freelap on  & 

MADE BY FREELAP SA
Av. D.-Jeanrichard 2A
CH-2114 Fleurier – Switzerland
+41 32 861 52 42 - www.freelap.ch

freelap[®]
freedom of timing

TX GATE PRO

FREELAP START TRANSMITTER SPECIALLY
DESIGNED FOR SKIING.

INSTRUCTION FOR USE

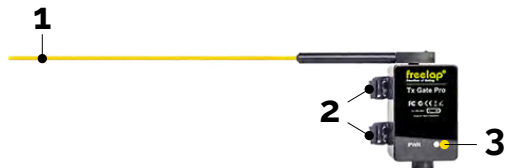
Congratulations on the purchase of your Tx Gate Pro transmitter ! This device has been designed to be convenient and simple to use. In this guide you will find all the information about how it works.

1 OVERALL FUNCTIONING

» YOUR TX GATE PRO

Your Tx Gate Pro is the **Freelap start transmitter specially designed for skiing**. This gate triggers the start of the transponder very accurately. When the skier crosses the gate (at the moment when his shins move the stick to 10° according to the FIS standard), the Tx Gate Pro emits a magnetic field (code "START") that triggers the start of the transponder.

» PARTS OF THE DEVICE



1. STICK : Triggers the start.

2. VELCRO STRAPS : To attach it to a stake.

3. "PWR" LED : Indicates that the device is on, and indicate a low battery (red light).

2 USE OF YOUR TX GATE PRO

» PREREQUISITES

Your Tx Gate Pro transmitter is part of the Freelap system. In order to make it work, you must **attach transponder(s) to the skier(s), turn on and place your other transmitters and your Relay Coach BLE, and use the MyFreelap app** (consult the corresponding user manuals for more details).

» PLACE YOUR TX GATE PRO AND TAKE THE START

> PLACE YOUR TRANSMITTER :

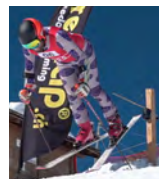
- Plant a wooden stake ideally 4x4cm (not supplied) at the start area.
- Attach your Tx Gate Pro to your stake using the Velcro straps on your transmitter. The stick should be placed at shins height (the snow-to-stick distance should be between 35 and 50 cm), parallel to the ground. The face of the case of your transmitter must be turned towards the track.

!/\ Placing the transmitter at any other location or position may result in inaccuracies or non-detection.

> TURN ON YOUR TRANSMITTER :

The Tx Gate Pro does not have any buttons. **It turns on automatically**, in a fraction of a second, when the skier takes the start (when the stick is moved by the skier). **It turns off automatically after each start.**

> TAKE THE START :



• Put yourself in starting position, both shins just in front of the stick.

• Start by crossing the gate (pushing the stick with your shins). The Tx Gate Pro emits a signal that triggers instantly the start of the FxChip transponder. It will also make a sound that confirms that the gate has been triggered.

• The fiberglass stick automatically returns to its initial position after each start.

» ASSOCIATE IT WITH OTHER FREELAP TRANSMITTERS

• To make Freelap system work, **you must have a transmitter set with the code "Finish" on your track.**

• The Tx Gate Pro is a start transmitter. You must also have at least one finish transmitter on your course (e.g.: Tx Track Pro transmitter set with the code "Finish").

• You can also **use it in combination with other Freelap transmitters** (e.g.: Tx Track Pro transmitter set with the code "Lap").

!/\ Your FxChip and FxChip BLE transponders have a temporary memory of 10 Laps. It means that **your track must contain a maximum of 11 transmitters.**

• The Tx Gate Pro must be placed at a minimum of 0.7 second from any other transmitter.

